

Flat Tin Roof Solar Racking System

The most economical and efficient solar roof mounting system for tilt installation on the buildings with flat tin roof. It can be easily applied on the flat roofs with Corrugated or Trapezoidal tin sheets. To combine with the specific adapters, the system can also be used on some commercial roofs with klip-lok tin sheets. With the concise design and high quality materials, ReneSola Flat Tin Roof solar Racking System can be your best choice for economy and safety.



Handy Installation:

Thanks to the concise design and strict quality control, this system can be quick and easily installed on the roof.



Extensive Flexibility:

This System is compatible with any sizes of framed modules on the market, especially with ReneSola's modules and micro-inverter;



Great Durability:

All the parts are made of high quality stainless steel and aluminum with anodized finish which are great at corrosion resistance and can provide durable service life in outdoor environment;



Handy Installation:

The system can easily applied on the flat roofs with Corrugated or Trapezoidal tin sheets. To combine with the specific adapters, the system can also be used on commercial roofs with klip-lok tin sheets.



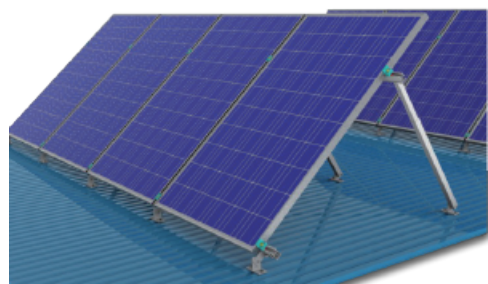
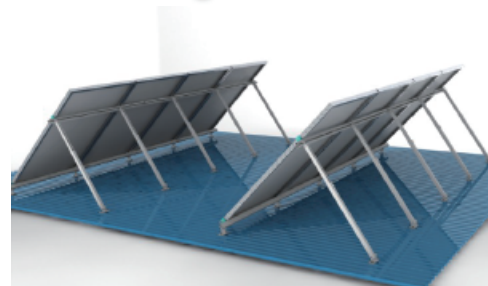
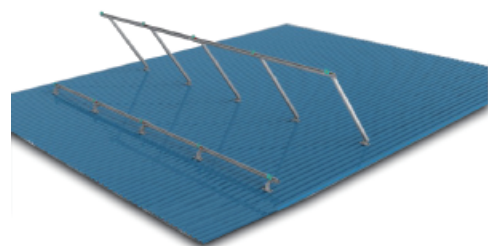
Fully adjustable:

With the easily adjustable back leg, the system can supply 3 adjustable range of tilt angle: 10°~15°, 15°~30°, 30°~60°



10 Years Warranty:

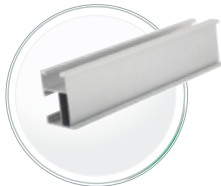
ReneSola provides 10 years warranty for the material and workmanship.



Specifications

Installation site	Flat tin roof	Module type	Framed with any sizes
Roof slope	0°~10°	Module layout	Portrait
Roof cladding	tin roof	Materials	Stainless steel and Anodized Alu.
Building height	Up to 10m	Standards	AS/NZS 1170, MCS012
Max wind speed	60 m/s	Warranty	10 years
Max snow load	1.4 KN/M2	Tile angle:	10°~15°, 15°~30°, 30°~60°

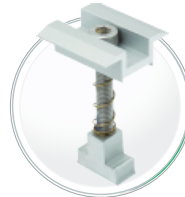




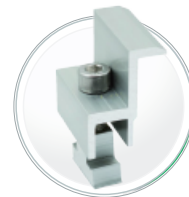
R-S1



SR-S1/200



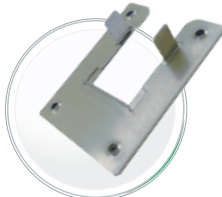
C-SM/H35-45



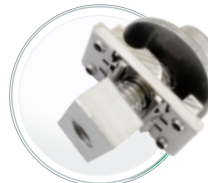
C-SE



CS-CC/L20



GS-GP/SR



GS-GC/SR



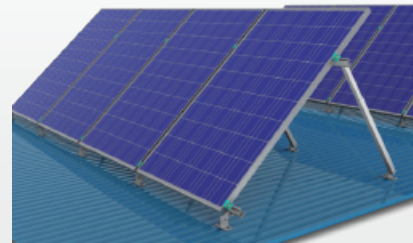
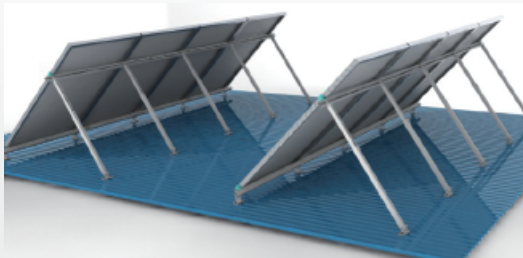
RB-TA X/Y

Part No.	Part Name	Description
R-S1/length	Standard Rail 1#	Supporting modules
SR-S1/200	Splice Group For Standard Rail 1#	Connect 2 standard rail 1#, 200mm length
C-SM/H35-45	Middle Clamp Group (H35-45)	Clamp modules of 35~45mm thickness
C-SE	End Clamp Group	Clamp modules at the end of rows
RB-TA 10/15	Adjustable Tilt Leg Group	Aluminium front and back leg, adjustable to set
RB-TA 15/30		the right tile angle in 3 ranges:
RB-TA 30/60		10°~15°, 15°~30°, 30°~60°
CS-CC/L20	Cable Clip	Clamp DC wires onto module's frame(stainless steel)
GS-GP/SR	Grounding Plate I	Conduct the module's frames and rails
GS-GC/SR	Grounding Clip Group	Conduct Rails with copper wires

Note: We provide 3 standard lengths of the Standard Rail 1#: 2100mm, 3200mm, 4200mm. We can also provide any other customized lengths of the rail.

Application Site

- Flat tin roof with wood rafters, using wood screws directly.



- To combine with the specific adapter to fix on the flat tin roof with Klip-lok tin sheets

